

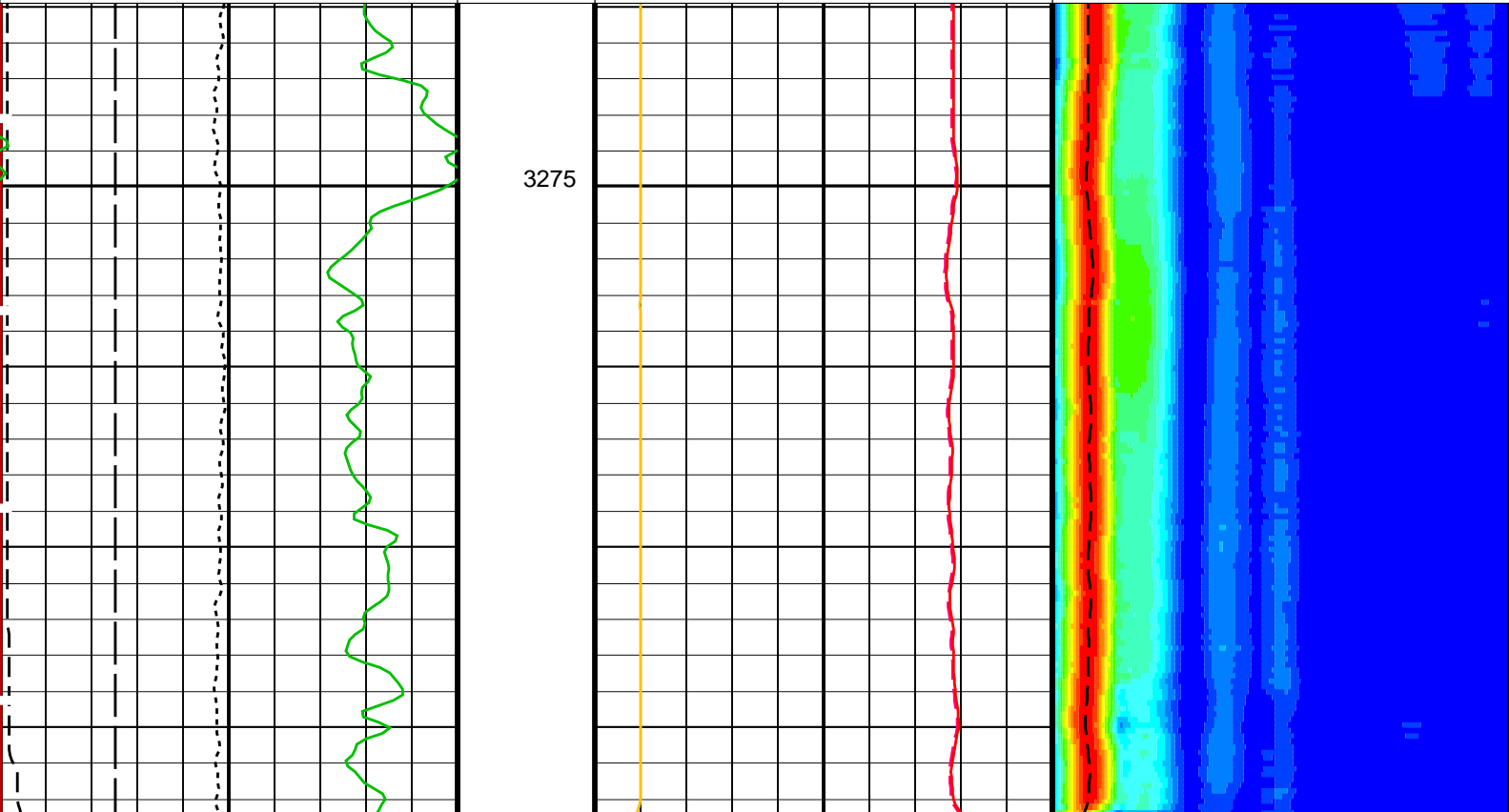
Input DLIS Files						
DEFAULT	FMI_DSI_027PUP	FN:40	PRODUCER	08-Feb-2010 22:35	3374.3 M	3269.9 M
Output DLIS Files						
DEFAULT	FMI_DSI_035PUP	FN:58	PRODUCER	09-Feb-2010 12:40	3374.3 M	3269.9 M

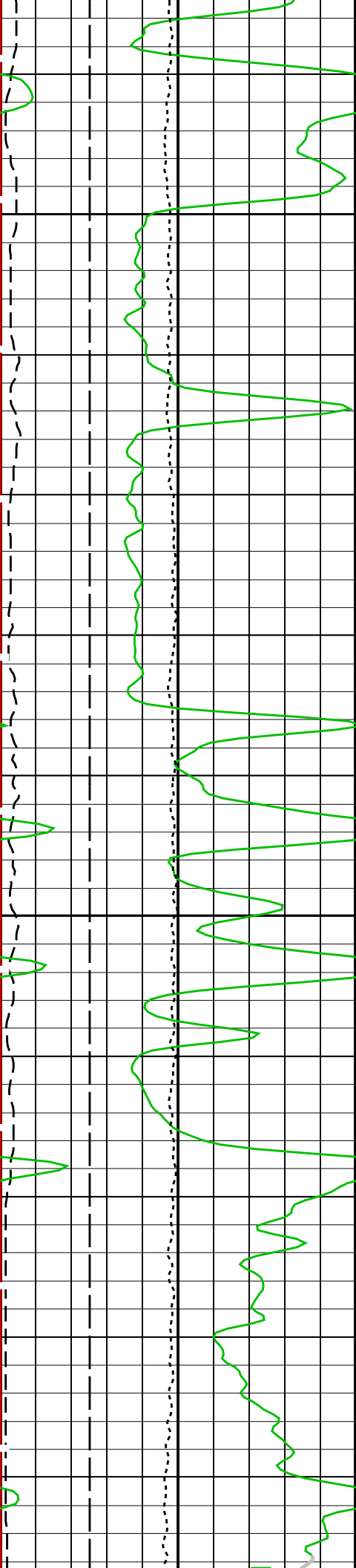
OP System Version: 17C0-154						
FBST-B	17C0-154	DSST-B	17C0-154			
EDTC-B	17C0-154	DTPC-A	17C0-154			

PIP SUMMARY

Time Mark Every 60 S

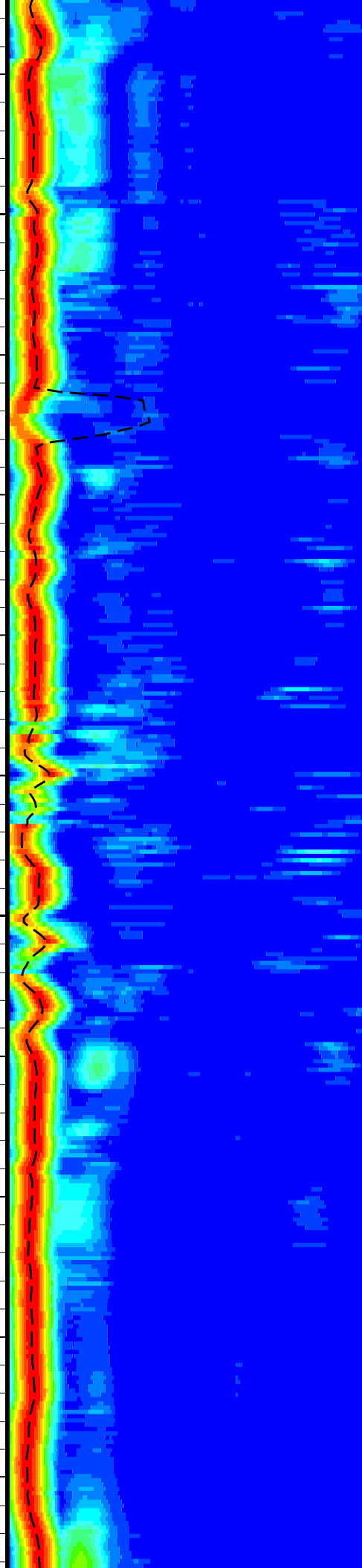
Waveform Data Copy Indicator 2 – Upper Dipole (WCI2)		Tool/Tot. Drag From D3T to STIA	Delta-T Shear – Upper Dipole (DT2)		<div><div>MinAmplitudeMax</div><div>Rec.Array U.Dipole Slow Proj. CVDL (SPR2) (US/F)</div><div>75775</div></div>
0	(----] 10		440	(US/F) 40	
Tension (TENS) (LBF) 100000					
Gamma Ray (GR_EDTC) (GAPI) 0200		Cable Drag From STIA to STIT	Delta-T Shear / RA – Upper Dipole (DT2R) (US/F) 44040		Delta-T Shear / RA – Upper Dipole (DT2R) (US/F) 75775
SAM2 Waveform Gain (WFG2) 01000					
Bit Size (BS) (IN) 616					
Stuck Stretch (STIT) 020		Peak Coherence / RA – Upper Dipole (CHR2) (----] 010			

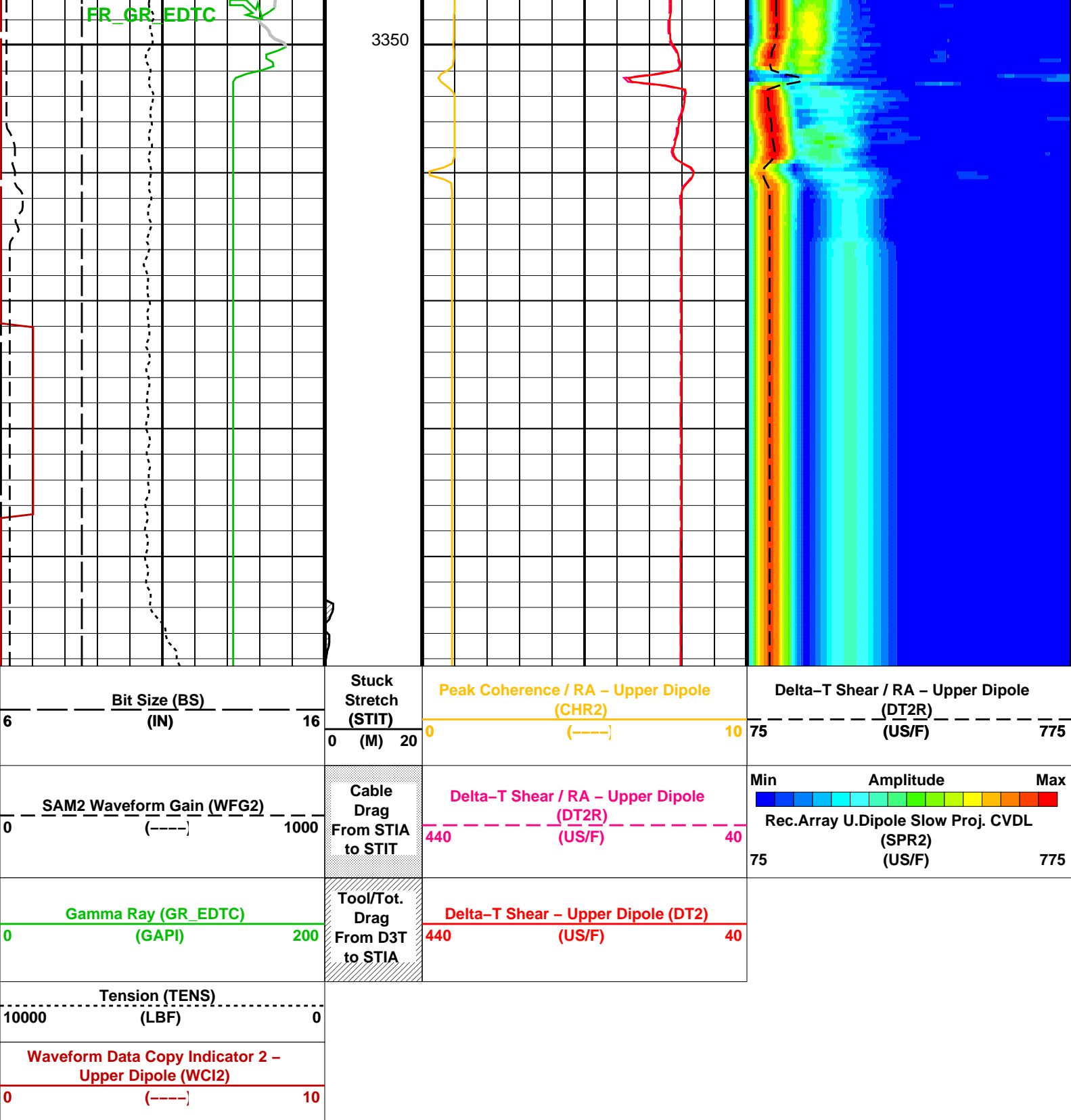




3300

3325





PIP SUMMARY

Time Mark Every 60 S

Parameters

DLIS Name	Description	Value	
DSST-B: Dipole Shear Imager – B			
DDE2	Digitizing Delay 2	0	US
DDEX	Digitizing Delay X	0	US
DLCS	Label Compressional Source – Dipole Shear	USE	
DSHL	Label Slowness Lower Limit – Dipole Shear	75	US/F
DSHU	Label Slowness Upper Limit – Dipole Shear	775	US/F
DSI2	Digitizer Sample Interval 2	40	US
DSIX	Digitizer Sample Interval X	40	US
DTCS	Compressional Delta-T Source for DTCS Channel	PS_COMP	
DSI2	Digitizer Sample Interval 2	40	US

DWC2	Digitizer Word Count 2	512	
DWCX	Digitizer Word Count X	512	
NWI2	Number Waveform Items 2	8	
NWIX	Number Waveform Items X	0	
RX1G	Receiver 1 Geometry	294	IN
RX2G	Receiver 2 Geometry	300	IN
RX3G	Receiver 3 Geometry	306	IN
RX4G	Receiver 4 Geometry	312	IN
RX5G	Receiver 5 Geometry	318	IN
RX6G	Receiver 6 Geometry	324	IN
RX7G	Receiver 7 Geometry	330	IN
RX8G	Receiver 8 Geometry	336	IN
SAM2	DSST Sonic Acquisition Mode 2 – Upper Dipole Mode	ODD	
SAMX	DSST Sonic Acquisition Mode X – Both Dipoles or Monopole Mode for Expert	OFF	
SAS2	STC Sonic Array Status – Upper Dipole	255	
SBO2	STC Search Band Offset – Upper Dipole	3000	US
SBW2	STC Search Bandwidth – Upper Dipole	8000	US
SFC2	STC Formation Character – Upper Dipole	SELECTABLE	
SFM2	STC Filter – Upper Dipole	B1–3K	
SLL2	STC Slowness Lower Limit – Upper Dipole	75	US/F
SST2	STC Slowness Step – Upper Dipole	4	US/F
SSW2	STC Source Waveform – Upper Dipole	WF_SAM2	
SUL2	STC Slowness Upper Limit – Upper Dipole	775	US/F
SWD2	STC Slowness Width – Upper Dipole	40	US/F
TBF2	STC Time for Baseline Fill – Upper Dipole	0	US
TLL2	STC Time Lower Limit – Upper Dipole	600	US
TST2	STC Time Step – Upper Dipole	200	US
TUL2	STC Time Upper Limit – Upper Dipole	15525	US
TWD2	STC Time Width – Upper Dipole	2000	US
TWI2	STC Integration Time Window – Upper Dipole	1600	US
TWSX	Transmitter Waveform Select X	0	
UTXG	Upper Dipole Transmitter Geometry	162	IN
WFM2	Waveform Mode 2	W1	
DIR: Directional Survey Computation			
SPVD	TVD of Starting Point	0	FT
TIMD	Along-hole depth of Tie-in Point	0	FT
TIVD	TVD of Tie-in Point	0	FT
STI: Stuck Tool Indicator			
LBFR	Trigger for MAXIS First Reading Label	STI	
STKT	STI Stuck Threshold	2.5	FT
TDD	Total Depth – Driller	3482.00	M
TDL	Total Depth – Logger	3482.50	M
System and Miscellaneous			
BS	Bit Size	8.500	IN
DO	Depth Offset for Playback	0.0	M
PP	Playback Processing	NORMAL	

Format: DSST_UPPER_DIPOLE_VDL_COLOR Vertical Scale: 1:200 Graphics File Created: 09-Feb-2010 12:40

OP System Version: 17C0-154

FBST-B	17C0-154	DSST-B	17C0-154
EDTC-B	17C0-154	DTPC-A	17C0-154

Input DLIS Files

DEFAULT	FMI_DSI_027PUP	FN:40	PRODUCER	08-Feb-2010 22:35	3374.3 M	3269.9 M
---------	----------------	-------	----------	-------------------	----------	----------

Output DLIS Files

DEFAULT	FMI_DSI_035PUP	FN:58	PRODUCER	09-Feb-2010 12:40
---------	----------------	-------	----------	-------------------